

# Pine Marten Winter Track Density Swan Valley, Montana

Data collected by Northwest Connections  
Map created by Alexis VanVliet  
Bigfork High School AESOP Class, May 2011

Tracks per sq mi

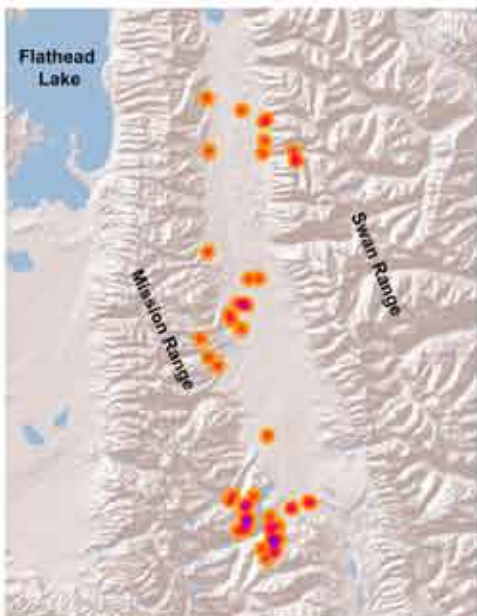


0 3.75 7.5 15 Miles

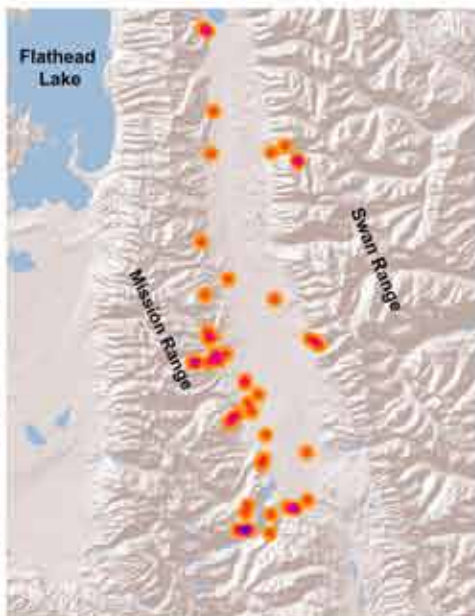


Pine Martens (*Martes americana*) are medium sized carnivores that prey on squirrels, mice, rabbits, and birds. As apex level predators they are important to forest ecosystems. Northwest Connections has been monitoring Pine Marten population densities with snowmobile monitored winter track surveys for 11 years. Their data shows a decline in Marten populations and a need to initiate conservation strategies.

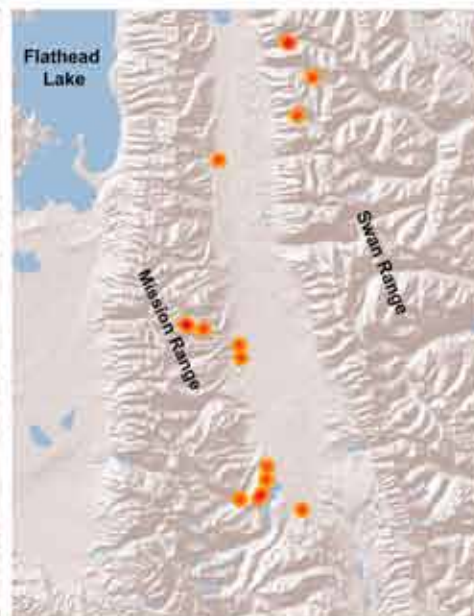
2003



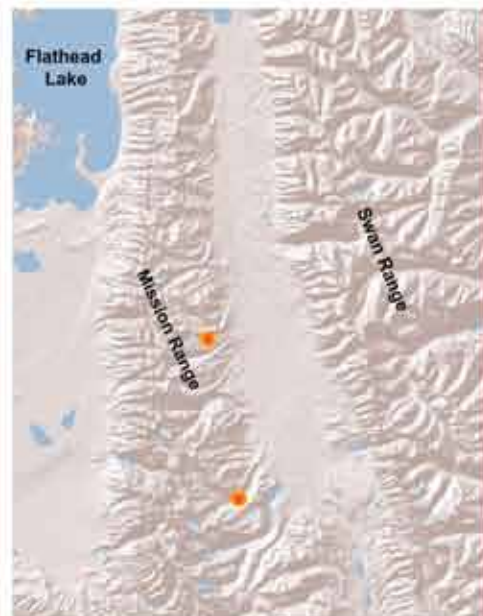
2004



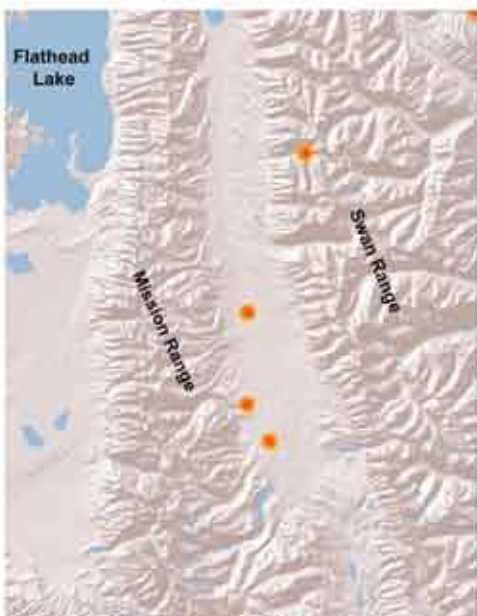
2005



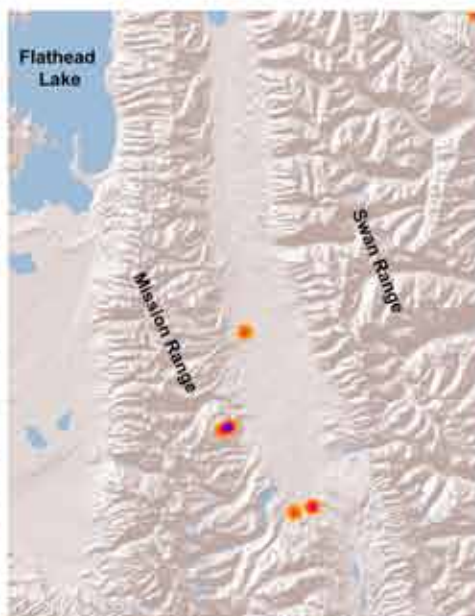
2006



2007



2008



2009



2010

