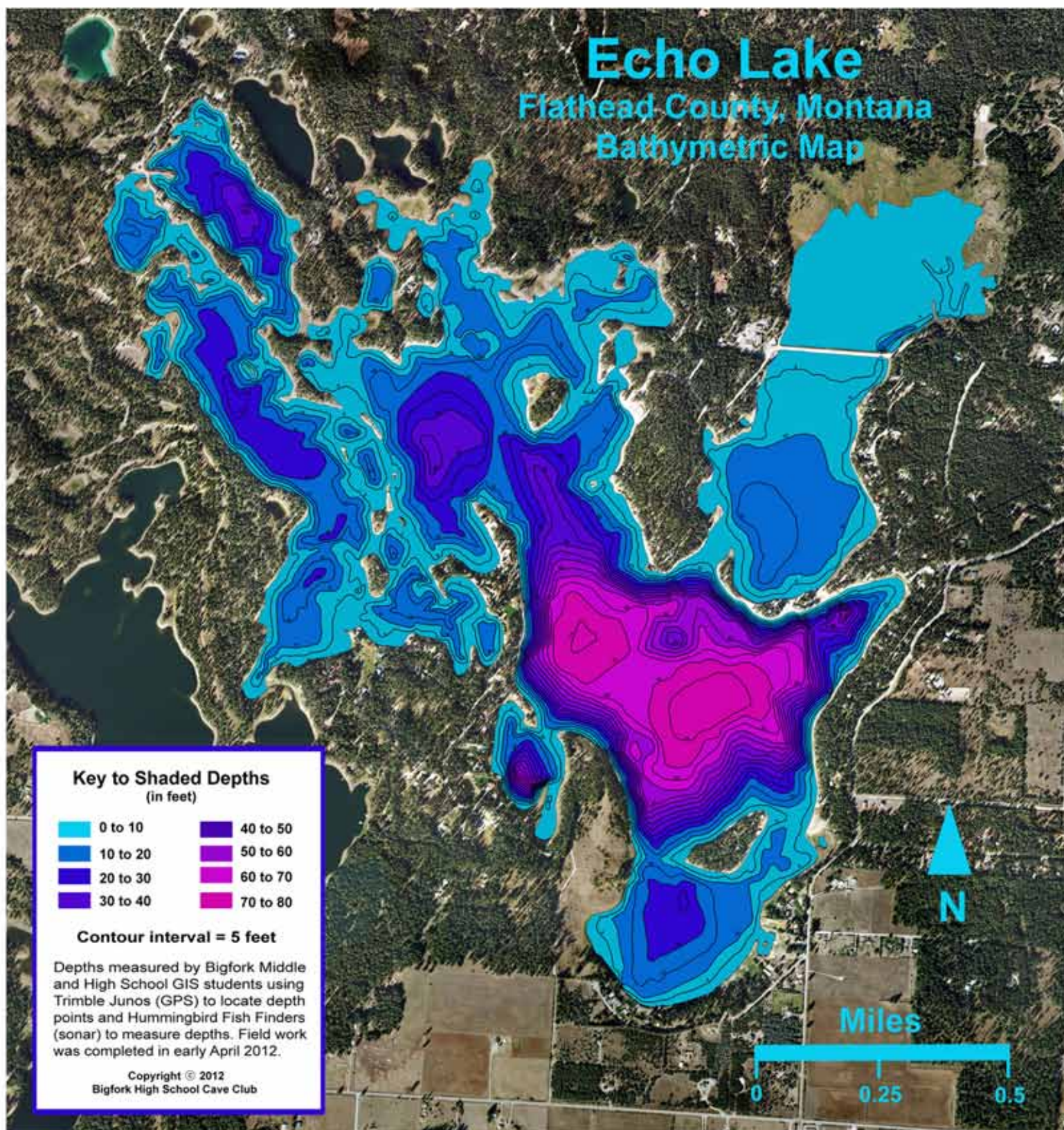










# Echo Lake

Flathead County, Montana  
Bathymetric Map



## Key to Shaded Depths (in feet)

 0 to 10	 40 to 50
 10 to 20	 50 to 60
 20 to 30	 60 to 70
 30 to 40	 70 to 80

Contour interval = 5 feet

Depths measured by Bigfork Middle and High School GIS students using Trimble Junos (GPS) to locate depth points and Hummingbird Fish Finders (sonar) to measure depths. Field work was completed in early April 2012.

Copyright © 2012  
Bigfork High School Cave Club

Miles

0 0.25 0.5